



# Sil-Met™ REPAIR SOLUTIONS For Hamilton Sundstrand Power Relays

**OEM QUALITY AT A FRACTION OF OEM PRICE**

900D09-Series



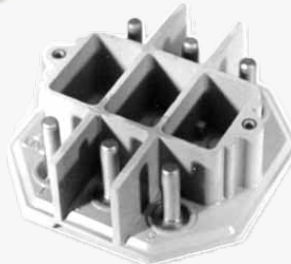
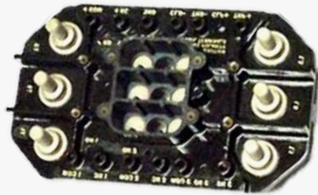
942D023-Series



941D335-Series



914F567-Series



Sil-Met™ "Next Generation" Repair Solutions  
available for the following PNs:

- 962C526-1
- 965C861-1
- 965C321-1
- 965C321-3
- 946B005-1
- 946B015-1
- 946B016-1
- 946B011-1
- 947B179-1
- 949B071-1
- 966C748-1
- 966C748-2
- 9D8554-2
- 14D3020-3
- 14D3021-3
- 941D739-3
- 946F029-1
- 946F429-13
- 977J237-1
- ...and much more

- START YOUR OWN EXCHANGE POOL
- TURN CONSUMABLE INTO REPAIRABLE
- SUBSTANTIAL SAVINGS OVER THE COST OF OEM

**FAA AND AIRLINE APPROVED REPAIR PROCESS FOR INDIVIDUAL CONTACTS, TERMINAL BOARDS, OR POWER RELAYS**

NAASCO, 222 Grand Ave. Brookhaven Airport, Shirley, NY 11967  
Tel: 631-399-2244 • www.naasco.com • Fax: 631-399-2275  
FAA Repair Station No. FD1R135K / EASA.145.4687