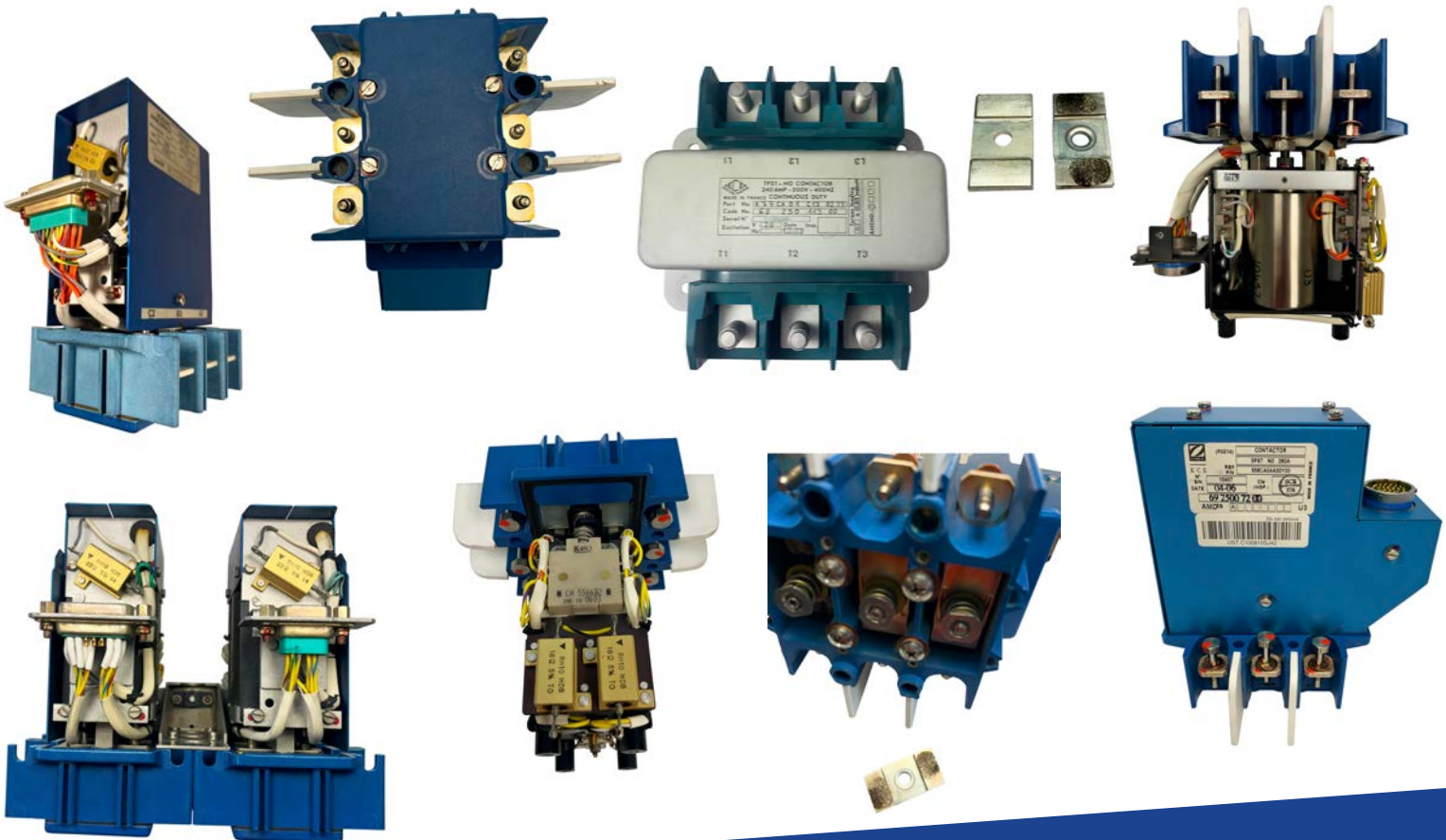




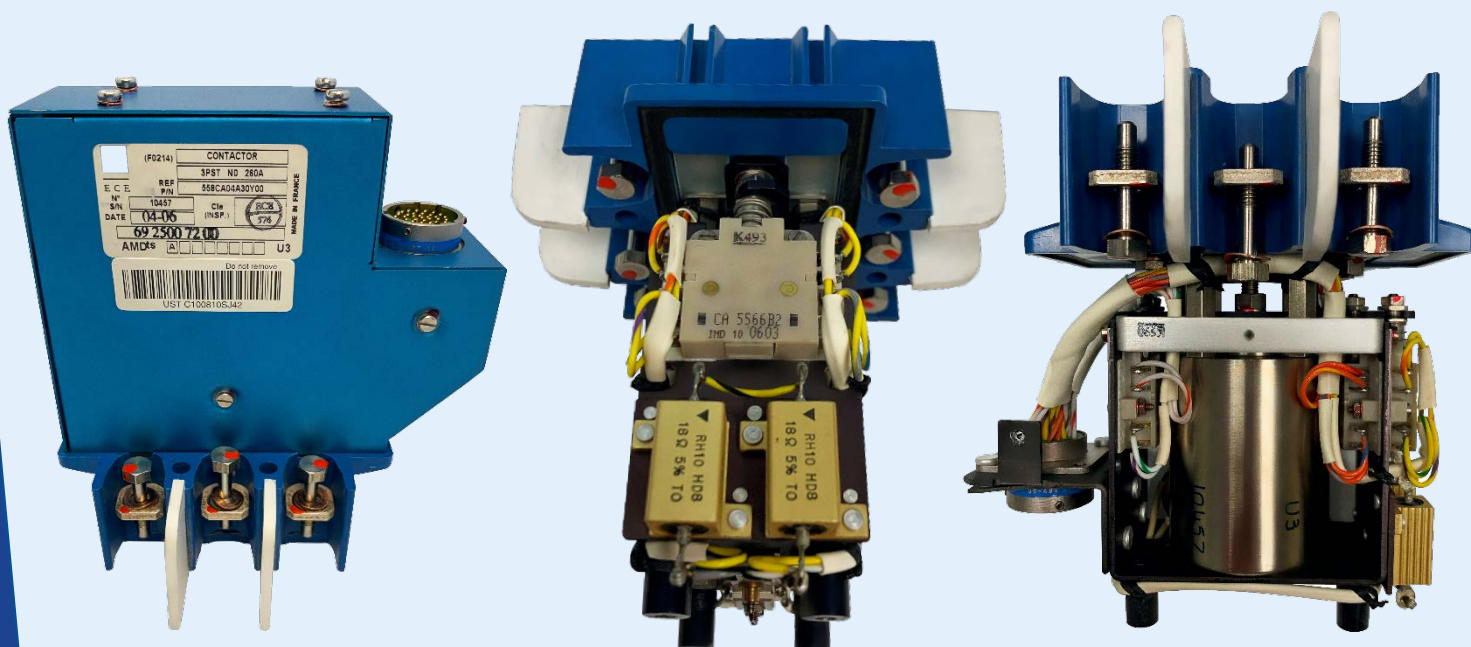
SIL-MET™ REPAIR SOLUTIONS FOR POWER RELAYS, ELECTRICAL CONTACTS, AND TERMINAL BOARDS





Sil-Met™ REPAIR SOLUTIONS For Airbus Zodiac Contactor

CUT COSTS WITHOUT COMPROMISING QUALITY!



PN: 558CA01Y1, 558CA04A30Y00, 558CA04A40Y00, AND 558CA04A41Y00

FITTED TO:

A318 - A319 - A320 - A321

▪ A330 ▪ A340 ▪ A380

FAA / DER APPROVED REPAIR

- TURN CONSUMABLE INTO REPAIRABLE
- COST-EFFECTIVE
- ALTERNATIVE TO OEM NEW
- QUALITY SERVICES – RAPID TURN AROUND TIMES
- ISSUED WITH A FAA/EASA DUAL RELEASE 8130-3 TAG

FAA / DER APPROVED REPAIR PROCESS TURNS YOUR CONSUMABLES INTO REPAIRABLE AT A FRACTION OF OEM NEW

NAASCO, 222 Grand Ave. Brookhaven Airport, Shirley, NY 11967

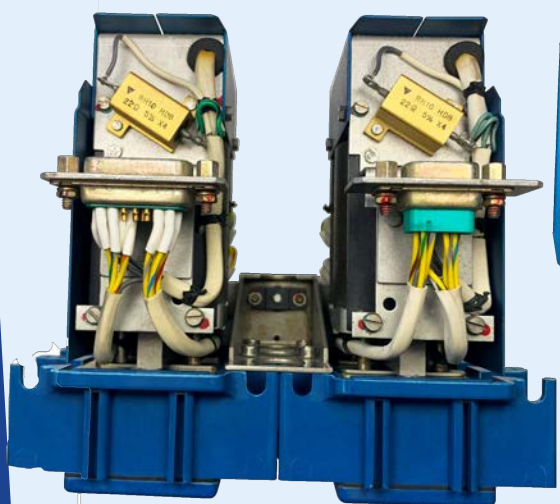
Tel: 631-399-2244 • www.naasco.com • Fax: 631-399-2275

FAA Repair Station No. FD1R135K / EASA.145.4687



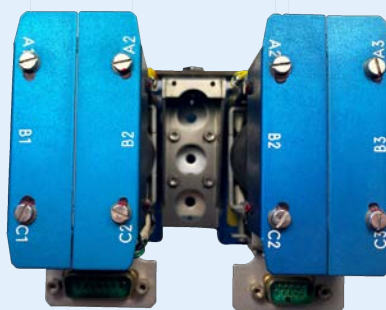
Bombardier DHC-8 Q400 Contactor Support

CUT COSTS WITHOUT COMPROMISING QUALITY



**Honeywell
Contactor**

PN: 1095998-1
(ECE PN 815CA01)



Honeywell Contactor

PN: 1096224-2
(ECE PN 227CC02AY00)



Substantial savings over OEM New

COST-EFFECTIVE

Increase your Return on Investment! Extend the life of your contactors – return them to 'like new' condition with our advanced Sil-Met™ Repair Solutions.

NAASCO DELIVERS

Quality service. Rapid turn around times. Repaired contactors shipped with 8130-3/EASA Form 1 tags.

COMMITMENT TO QUALITY

Since 1984, we have provided cost-effective repair solutions for a variety of aircraft components. We strive to maintain the highest levels of quality, reliability, and dependability to give you the "Best Value" for your maintenance dollar.

Contact NAASCO today for more information on our cost-saving Sil-Met™ Repair Solutions.

NAASCO, 222 Grand Ave. Brookhaven Airport, Shirley, NY 11967

Tel: 631-399-2244 • www.naasco.com • Fax: 631-399-2275

FAA Repair Station No. FD1R135K / EASA.145.4687



Sil-Met™ REPAIR SOLUTIONS for Airbus E.C.E. Relays

E.C.E. RELAY FITTED TO AIRBUS FAMILY



PN's include:

- 477CA01C15-02Y2
- 477CA01C15-02Y3

- TURN CONSUMABLE
INTO REPAIRABLE
- COST-EFFECTIVE
ALTERNATIVE TO
OEM NEW
- QUALITY SERVICES
– RAPID TURN
AROUND TIMES

CUT COSTS WITHOUT COMPROMISING QUALITY!

REPAIRED TERMINAL BLOCK AND CONTACT ASSY

PN: CA4374SC2

Advanced Repair Technology
Cost-effective alternative to OEM New

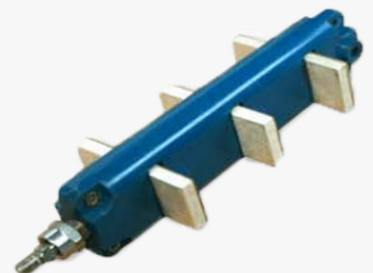


REPAIRED TERMINAL BLOCK (DETACHED)



REPAIRED MOVING CONTACT ASSY

PN: CA4330



**FAA APPROVED REPAIR PROCESS TURNS YOUR CONSUMABLES
INTO REPAIRABLE AT A FRACTION OF OEM NEW**

NAASCO, 222 Grand Ave. Brookhaven Airport, Shirley, NY 11967

Tel: 631-399-2244 • www.naasco.com • Fax: 631-399-2275

FAA Repair Station No. FD1R135K / EASA.145.4687



NAASCO REPAIR SOLUTIONS For E.C.E Relays

ADVANCED REPAIR TECHNOLOGY • COST-EFFECTIVE ALTERNATIVE TO OEM NEW



PN: 480CC01

E.C.E Relays
Fitted to ERJ Aircraft



PN: 464CC01Y1



FAA APPROVED REPAIR PROCESS TURNS YOUR CONSUMABLES INTO REPAIRABLE

NAASCO, 222 Grand Ave. Brookhaven Airport, Shirley, NY 11967

Tel: 631-399-2244 • www.naasco.com • Fax: 631-399-2275

FAA Repair Station No. FD1R135K / EASA.145.4687



Sil-Met™ REPAIR SOLUTIONS CONTACTS & RELAY ASSEMBLIES

**FOR THE REGIONAL
COMMUTER AND
MAJOR AIRLINES**



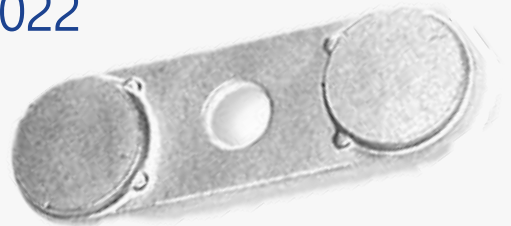
DC 8 50137-SERIES
B 727 50086-SERIES

REPAIRED LUCAS RELAY CONTACTS

50086-1017



50086-1022



50086-1012



FAA AND AIRLINE APPROVED REPAIR PROCESS FOR INDIVIDUAL CONTACTS AND RELAY ASSEMBLIES

NAASCO, 222 Grand Ave. Brookhaven Airport, Shirley, NY 11967
Tel: 631-399-2244 • www.naasco.com • Fax: 631-399-2275
FAA Repair Station No. FD1R135K / EASA.145.4687



Sil-Met™ REPAIR SOLUTIONS For Hamilton Sundstrand Power Relays

OEM QUALITY AT A FRACTION OF OEM PRICE

9008D09-Series



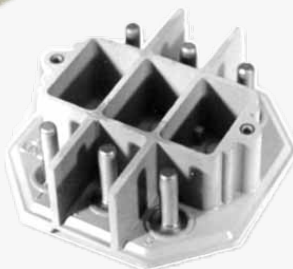
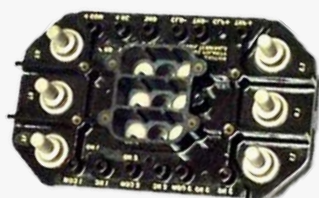
942D023-Series



941D335-Series



914F567-Series



Sil-Met™ "Next Generation" Repair Solutions
available for the following PNs:

- 962C526-1
- 965C861-1
- 965C321-1
- 965C321-3
- 946B005-1
- 946B015-1
- 946B016-1
- 946B011-1
- 947B179-1
- 949B071-1
- 966C748-1
- 966C748-2
- 9D8554-2
- 14D3020-3
- 14D3021-3
- 941D739-3
- 946F029-1
- 946F429-13
- 977J237-1
- ...and much more

- START YOUR OWN EXCHANGE POOL
- TURN CONSUMABLE INTO REPAIRABLE
- SUBSTANTIAL SAVINGS OVER THE COST OF OEM

FAA AND AIRLINE APPROVED REPAIR PROCESS FOR INDIVIDUAL CONTACTS, TERMINAL BOARDS, OR POWER RELAYS

NAASCO, 222 Grand Ave. Brookhaven Airport, Shirley, NY 11967

Tel: 631-399-2244 • www.naasco.com • Fax: 631-399-2275

FAA Repair Station No. FD1R135K / EASA.145.4687

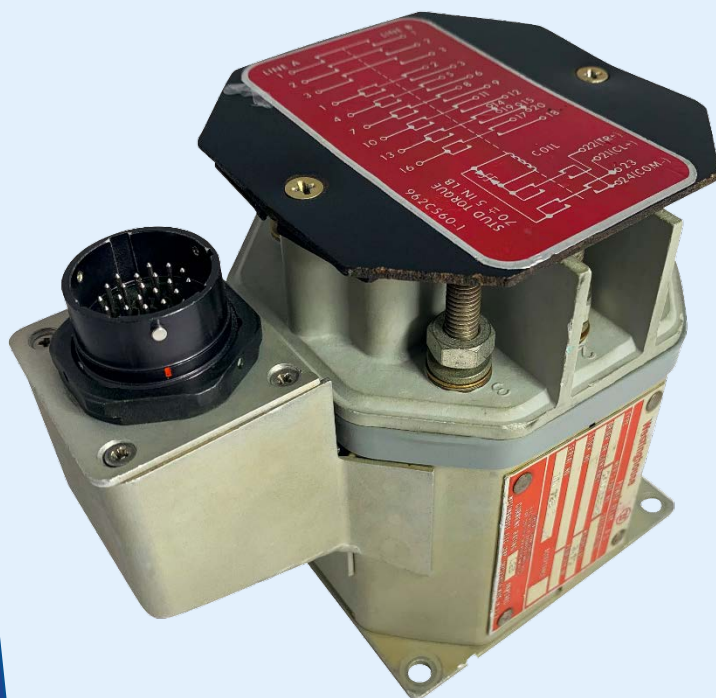


Sil-Met™ REPAIR SOLUTIONS For Power Relays, Contacts, and Terminal Boards

FOR THE REGIONAL COMMUTER
AND MAJOR AIRLINES

POWER RELAY FITTED TO BOEING 737 AIRCRAFT

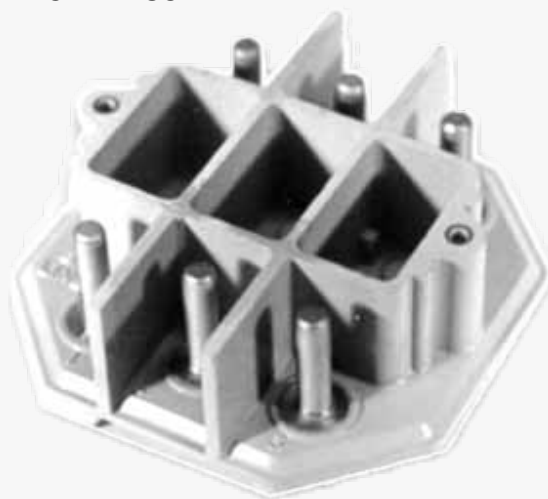
PN: 941D335-4



TERMINAL BOARD

PNs:

- 941D739-3
- 941D739-4



CONTACT

PN: 962C526-1

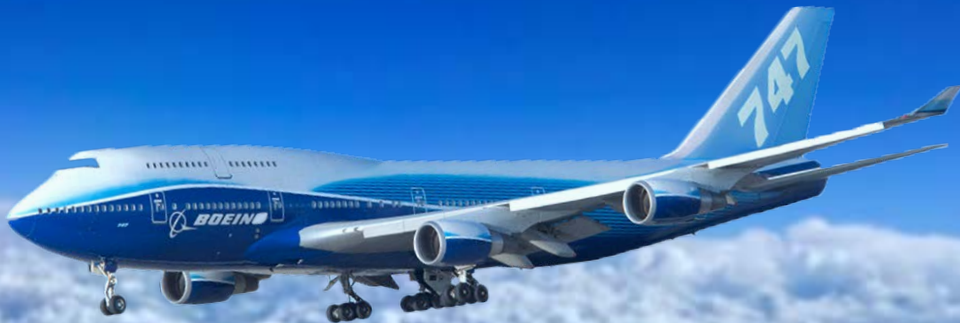


FAA AND AIRLINE APPROVED REPAIR PROCESS FOR INDIVIDUAL CONTACTS AND RELAY ASSEMBLIES

NAASCO, 222 Grand Ave. Brookhaven Airport, Shirley, NY 11967

Tel: 631-399-2244 • www.naasco.com • Fax: 631-399-2275

FAA Repair Station No. FD1R135K / EASA.145.4687



Sil-Met™ REPAIR SOLUTIONS For Power Relays, Contacts, and Terminal Boards

ENJOY SUBSTANTIAL SAVINGS
OVER THE COST OF OEM NEW

HAMILTON SUNDSTRAND
FOR BOEING 747

942D023-SERIES



REPAIRED TERMINAL BOARD



PNs:

- 942D632-1
- 946F429-5

REPAIRED CONTACTS



PNs:

- 949B071-1
- 965C321-1

FAA AND AIRLINE APPROVED REPAIR PROCESS FOR INDIVIDUAL CONTACTS AND RELAY ASSEMBLIES

NAASCO, 222 Grand Ave. Brookhaven Airport, Shirley, NY 11967

Tel: 631-399-2244 • www.naasco.com • Fax: 631-399-2275

FAA Repair Station No. FD1R135K / EASA.145.4687



Sil-Met™ REPAIR SOLUTIONS For Power Relays, Contacts, and Terminal Boards

ENJOY SUBSTANTIAL SAVINGS
OVER THE COST OF OEM NEW

POWER RELAY FITTED TO:
DC 9 ▪ MD 80



PN: 9008D09

REPAIRED TERMINAL BOARD



PN: 977J237

REPAIRED CONTACTS



PN: 965C861-1

FAA AND AIRLINE APPROVED REPAIR PROCESS FOR INDIVIDUAL CONTACTS AND RELAY ASSEMBLIES

NAASCO, 222 Grand Ave. Brookhaven Airport, Shirley, NY 11967

Tel: 631-399-2244 • www.naasco.com • Fax: 631-399-2275

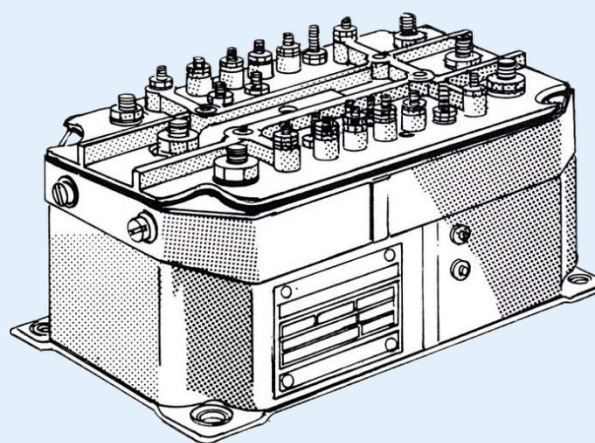
FAA Repair Station No. FD1R135K / EASA.145.4687



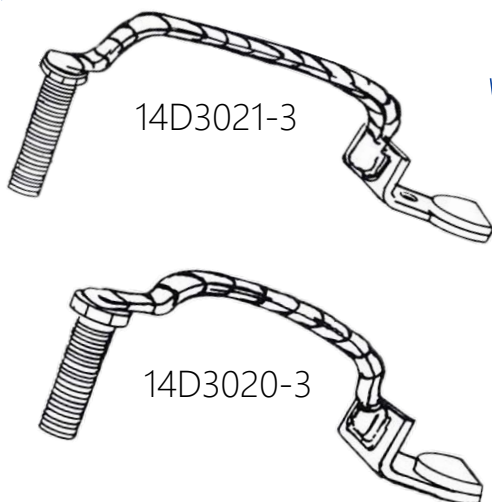
Sil-Met™ REPAIR SOLUTIONS CONTACTS & RELAY ASSEMBLIES

FOR THE REGIONAL COMMUTER AND MAJOR AIRLINES

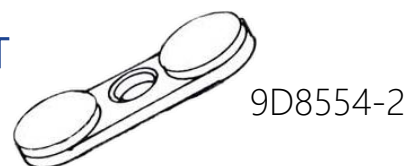
HAMILTON/SUNDSTRAND
914F567-SERIES POWER RELAY



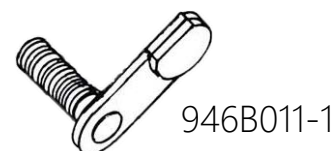
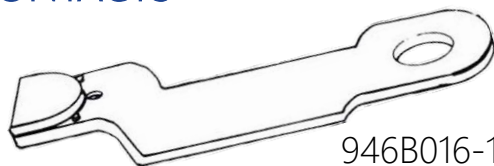
CABLES



MOVABLE CONTACT



CONTACTS



FAA AND AIRLINE APPROVED REPAIR PROCESS FOR INDIVIDUAL CONTACTS AND RELAY ASSEMBLIES

NAASCO, 222 Grand Ave. Brookhaven Airport, Shirley, NY 11967
Tel: 631-399-2244 • www.naasco.com • Fax: 631-399-2275
FAA Repair Station No. FD1R135K / EASA.145.4687



Sil-Met™ REPAIR SOLUTIONS

For Power Relays, Contacts, and Terminal Boards

ENJOY SUBSTANTIAL SAVINGS
OVER THE COST OF OEM NEW

POWER RELAY FITTED TO:
DC 10 ▪ MD 10 ▪ MD 11



PNs:
▪ 943D206
▪ 763222

REPAIRED TERMINAL BOARD



PNs:
▪ 946F429-9
▪ 946F429-13

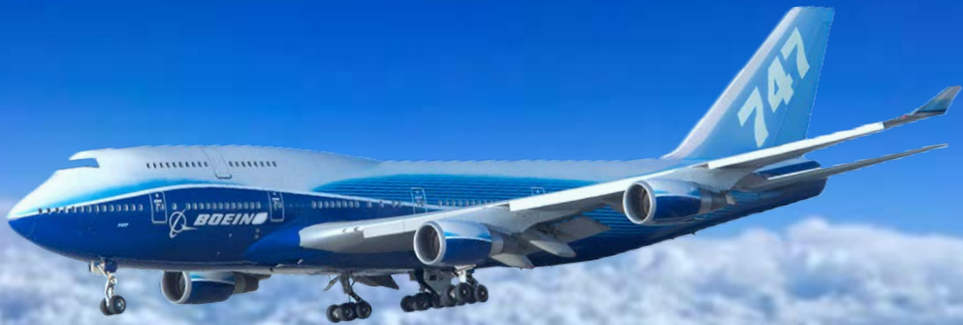
REPAIRED CONTACTS



PNs:
▪ 966C748-1
▪ 966C748-2

FAA AND AIRLINE APPROVED REPAIR PROCESS FOR INDIVIDUAL CONTACTS AND RELAY ASSEMBLIES

NAASCO, 222 Grand Ave. Brookhaven Airport, Shirley, NY 11967
Tel: 631-399-2244 • www.naasco.com • Fax: 631-399-2275
FAA Repair Station No. FD1R135K / EASA.145.4687



Affordable Repair Solutions for Honeywell ELCUs Fitted to Boeing B747 ▪ B757 ▪ B767

Sil-Met™ Repair Technology*
Cost-effective alternative
to OEM new



ELCU Support Include:

3B39-1B	3B41-1A
3B39-1C	3B41-1B
3B39-2A	3B41-3A
3B50-2A	3B41-3B

*Limited to piece part support only

BUS BAR/CURRENT TRANSFORMER ASSEMBLIES

1593926-1



1593926-2



1593926-3

Coil Assy

1593917-1



Operator Assy

1593909-1



Bus Bar/Contact Assy

1593921-1



1593921-2



FAA APPROVED REPAIR PROCESS TURNS YOUR CONSUMABLE PIECE PARTS INTO REPAIRABLE

NAASCO, 222 Grand Ave. Brookhaven Airport, Shirley, NY 11967

Tel: 631-399-2244 • www.naasco.com • Fax: 631-399-2275

FAA Repair Station No. FD1R135K / EASA.145.4687



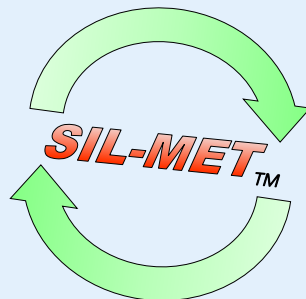
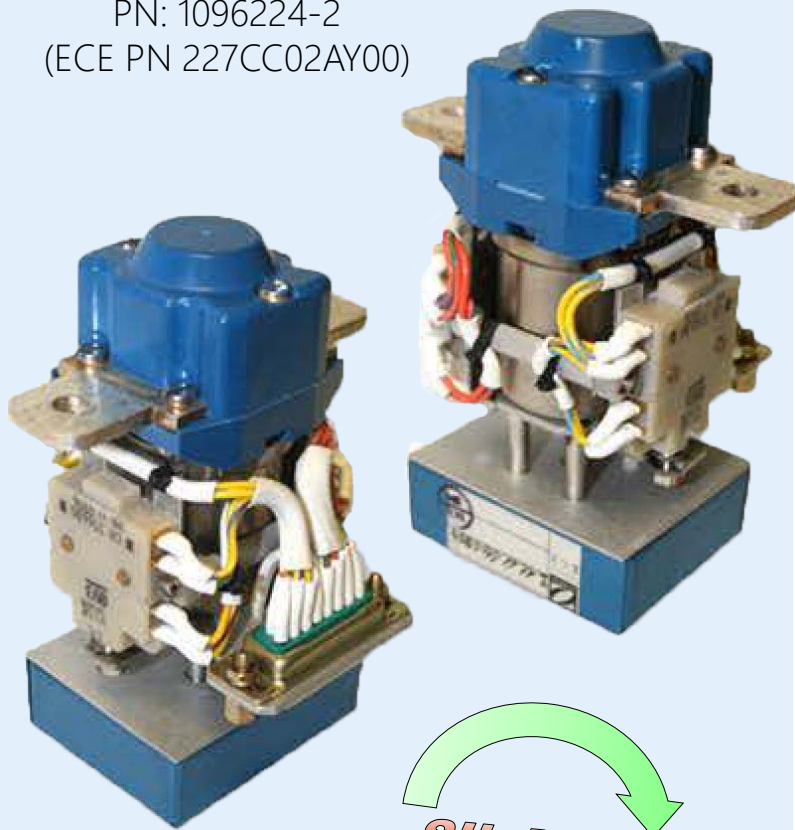
Bombardier DHC-8 Q400 Relay Support

CUT COSTS WITHOUT COMPROMISING QUALITY

NEW ITEM!

Honeywell Contactor

PN: 1096224-2
(ECE PN 227CC02AY00)



Substantial savings over OEM New

COST-EFFECTIVE

Increase your Return on Investment! Extend the life of your contactors – return them to 'like new' condition with our advanced Sil-Met™ Repair Solutions.

NAASCO DELIVERS

Quality service. Rapid turn around times. Repaired contactors shipped with 8130-3/EASA Form 1 tags.

COMMITMENT TO QUALITY

Since 1984, we have provided cost-effective repair solutions for a variety of aircraft components. We strive to maintain the highest levels of quality, reliability, and dependability to give you the "Best Value" for your maintenance dollar.

Contact NAASCO today for more information on our cost-saving Sil-Met™ Repair Solutions.

NAASCO, 222 Grand Ave. Brookhaven Airport, Shirley, NY 11967

Tel: 631-399-2244 • www.naasco.com • Fax: 631-399-2275

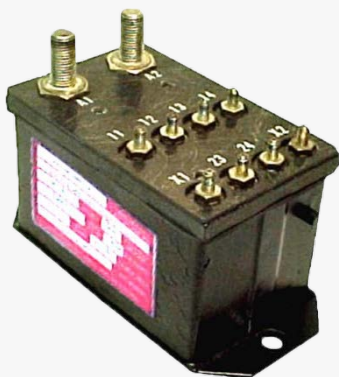
FAA Repair Station No. FD1R135K / EASA.145.4687



Sil-Met™ REPAIR SOLUTIONS For Hartman Power Relays

OEM QUALITY AT A FRACTION OF OEM PRICE

A-703-Series



AN-3025-1



A-700-Series



A-1077-Series



A-2043C PDU



B-102F



A-2042C PDU



Partial List of Contact Part Numbers
for Relays shown above:

- 32054-010 (Post, Left Contact)
- 32055-010 (Post, Right Contact)
- 11631-090 (Contact, Movable)
- ...and much more



- START YOUR OWN EXCHANGE POOL
- TURN CONSUMABLE INTO REPAIRABLE
- SUBSTANTIAL SAVINGS OVER THE COST OF OEM

FAA AND AIRLINE APPROVED REPAIR PROCESS FOR INDIVIDUAL CONTACTS OR RELAY SWITCHING ASSEMBLIES

NAASCO, 222 Grand Ave. Brookhaven Airport, Shirley, NY 11967

Tel: 631-399-2244 • www.naasco.com • Fax: 631-399-2275

FAA Repair Station No. FD1R135K / EASA.145.4687



Sil-Met™ REPAIR SOLUTIONS CONTACTS & RELAY ASSEMBLIES

FOR THE REGIONAL COMMUTER
AND MAJOR AIRLINES

B-102F POWER RELAY
FITTED TO B 727 AIRCRAFT



REPAIRED HARTMAN CONTACTS

CONTACT & BUS BAR

16056-050



CONTACT POST

16057-020



MOVABLE CONTACT

10643-000



FAA AND AIRLINE APPROVED REPAIR PROCESS FOR INDIVIDUAL CONTACTS AND RELAY ASSEMBLIES

NAASCO, 222 Grand Ave. Brookhaven Airport, Shirley, NY 11967

Tel: 631-399-2244 • www.naasco.com • Fax: 631-399-2275

FAA Repair Station No. FD1R135K / EASA.145.4687



Sil-Met™ REPAIR SOLUTIONS For Hartman A-700-Series Power Relays

OEM QUALITY AT A FRACTION OF OEM PRICE

A-700-Series



Increase your Return on Investment. Extend the life of your A-700 Relays by restoring worn contacts to like new condition with our Sil-Met™ Solutions.

Contact Part Numbers includes:

- 32054-010* (Post, Left Contact)
- 32055-010* (Post, Right Contact)
- 11631-090* (Contact Assembly, Movable)

*actual contact parts may vary

- START YOUR OWN EXCHANGE POOL
- TURN CONSUMABLE INTO REPAIRABLE
- SUBSTANTIAL SAVINGS OVER THE COST OF OEM

NAASCO, 222 Grand Ave. Brookhaven Airport, Shirley, NY 11967

Tel: 631-399-2244 • www.naasco.com • Fax: 631-399-2275

FAA Repair Station No. FD1R135K / EASA.145.4687



Sil-Met™ REPAIR SOLUTIONS For Hartman A-703-Series Power Relays

OEM QUALITY AT A FRACTION OF OEM PRICE

A-703-Series



Contact Part Numbers includes:

- 32054-010* (Post, Left Contact)
- 32055-010* (Post, Right Contact)
- 11631-090* (Contact Assembly, Movable)

*actual contact parts may vary

- START YOUR OWN EXCHANGE POOL
- TURN CONSUMABLE INTO REPAIRABLE
- SUBSTANTIAL SAVINGS OVER THE COST OF OEM

NAASCO, 222 Grand Ave. Brookhaven Airport, Shirley, NY 11967

Tel: 631-399-2244 • www.naasco.com • Fax: 631-399-2275

FAA Repair Station No. FD1R135K / EASA.145.4687



Sil-Met™ REPAIR SOLUTIONS For Hartman A-1077-Series Power Relays

Hartmann A-1077-Series fitted to
BOEING ▪ BELL ▪ SIKORKY



NAASCO offers the industry's only
FAA-approved repair process for A-
1077-Series Relays

OEM QUALITY AT A FRACTION OF OEM PRICE

- START YOUR OWN EXCHANGE POOL
- TURN CONSUMABLE INTO REPAIRABLE
- SUBSTANTIAL SAVINGS OVER THE COST OF OEM

Sil-Met™ "NEXT GENERATION"
Repair Solutions available for
the following part numbers:

A-1077
A-1077B
A-1077D
A-1077DD
A-1077F
A-1077V
A-1077W



Sil-Met™ REPAIR SOLUTIONS For Hartman AN-3025-1 Power Relays

OEM QUALITY AT A FRACTION OF OEM PRICE

AN-3025-1



Contact Part Numbers includes:

- 32054-010* (Post, Left Contact)
- 32055-010* (Post, Right Contact)
- 11631-090* (Contact Assembly, Movable)

*actual contact parts may vary

- START YOUR OWN EXCHANGE POOL
- TURN CONSUMABLE INTO REPAIRABLE
- SUBSTANTIAL SAVINGS OVER THE COST OF OEM

NAASCO, 222 Grand Ave. Brookhaven Airport, Shirley, NY 11967

Tel: 631-399-2244 • www.naasco.com • Fax: 631-399-2275

FAA Repair Station No. FD1R135K / EASA.145.4687



Sil-Met™ REPAIR SOLUTIONS

**HARTMAN POWER
DISTRIBUTION UNITS**
Fitted to SAAB 340 Aircraft



PN: A2043C PDU



PN: A2042C PDU

REPAIRED HARTMAN CONTACTS

32054-010



33084-010



11631-010



FOR THE REGIONAL AND COMMUTER AIRLINES

FAA AND AIRLINE APPROVED REPAIR PROCESS FOR INDIVIDUAL CONTACTS AND RELAY ASSEMBLIES

NAASCO, 222 Grand Ave. Brookhaven Airport, Shirley, NY 11967

Tel: 631-399-2244 • www.naasco.com • Fax: 631-399-2275

FAA Repair Station No. FD1R135K / EASA.145.4687