



Sil-Met™ REPAIR SOLUTIONS For Power Relays, Contacts, and Terminal Boards

FOR THE REGIONAL COMMUTER
AND MAJOR AIRLINES

POWER RELAY FITTED TO
BOEING 737 AIRCRAFT

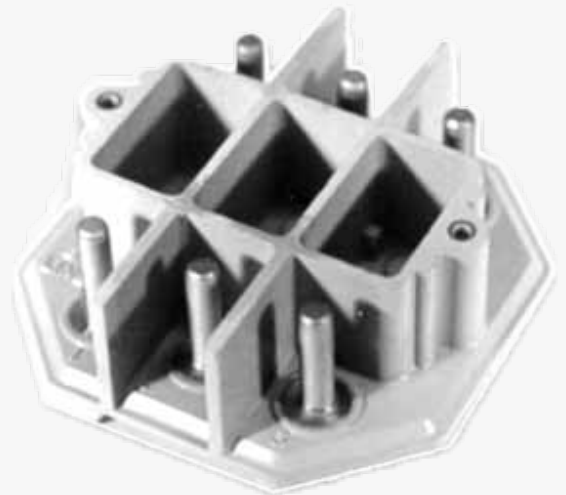
PN: 941D335-4



TERMINAL BOARD

PNs:

- 941D739-3
- 941D739-4



CONTACT

PN: 962C526-1



FAA AND AIRLINE APPROVED REPAIR PROCESS FOR INDIVIDUAL CONTACTS AND RELAY ASSEMBLIES

NAASCO, 222 Grand Ave. Brookhaven Airport, Shirley, NY 11967
Tel: 631-399-2244 • www.naasco.com • Fax: 631-399-2275
FAA Repair Station No. FD1R135K / EASA.145.4687