

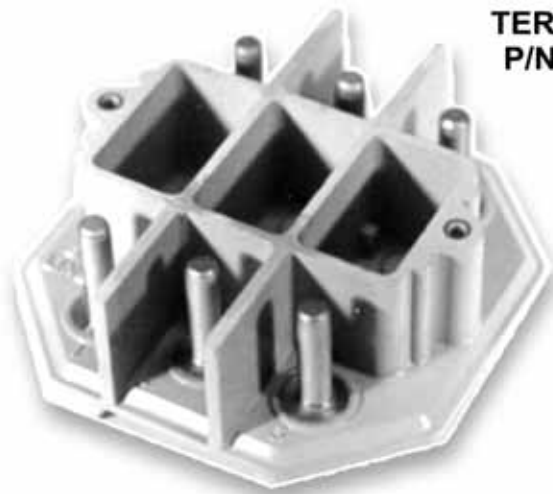


**NAASCO NORTHEAST CORP.**

For the regional commuter and major airlines  
NAASCO now offers . . .

# **Sil-Met™ Repair Solutions**

**For Power Relays, Contacts and Terminal Boards**



TERMINAL BOARD  
P/N 941D739-3, -4



POWER RELAY P/N 941D335-4  
FITTED TO BOEING 737 AIRCRAFT



CONTACT  
P/N 962C526-1

FAA AND AIRLINE APPROVED  
REPAIR PROCESS FOR  
INDIVIDUAL CONTACTS AND  
RELAY ASSEMBLIES

NAASCO NORTHEAST CORP. 222 GRAND AVE. BROOKHAVEN AIRPORT, SHIRLEY, NEW YORK 11967

Tel: 631-399-2244 • WWW.NAASCO.COM • Fax: 631-399-2275

FAA repair station No. FD1R135K / EASA.145.4687